



# TEREX

# TH1056C

## Telehandler

<b>OPERATING WEIGHT</b>	31,200 lbs (14,149 kg)
<b>NET ENGINE POWER</b>	125 hp (93.3 kW)
<b>MAXIMUM LIFT CAPACITY</b>	10,000 lbs (4,536 kg)
<b>MAXIMUM LIFT HEIGHT</b>	56' 0" (17.1 m)



TELEHANDLER  
**TH1056C**

### Specifications

#### Performance

Operating weight with forks	31,200 lbs (14,149 kg)
Inside/outside turn radius	6' 8" / 15' 2" (2.03 / 4.62 m)
Maximum lifting height	56' (17.1 m)
Reach at maximum height	7' 0" (2.13 m)
Maximum forward reach	40' (12.1 m)
Maximum lift capacity	10,000 lbs (4,536 kg)
Payload at maximum height	4,000 lbs (1,814 kg)
Payload at maximum reach	2,000 lbs (907 kg)

#### Steering

Power assisted steering

Three steering modes: 2-wheel, 4-wheel coordinated, and 4-wheel crab

#### Engine

John Deere 4045T	
4 cylinders turbocharged diesel	
Power @ 2,400 rpm	125 hp (93.3 kW)
Tier II Compliant	

#### Transmission

3 Speed Powershift/Torque Converter	
4 wheel drive	
Front axle differential lock	
Maximum speed	18.5 mph (29.8 km/h)

#### Brakes

Inboard multiple wet disc

# Telehandler TH1056C

## Specifications

### Sway Control - Frame Leveling

Circuit isolated cylinders, 10 degrees either side of center

### Frame Stabilizer

Twin rear axle lock cylinders

### Hydraulic System

Pressure compensated hydraulic system

Variable-displacement axial piston pump

10 Micron filtration

### Tank Capacities

Fuel 30 gal (113.6 L)

Hydraulic oil 48 gal (181.7 L)

### Tires

1400 x 24-12 ply, calcium chloride solution filled

### Forks and Attachment Holder Plate

Length 48" (1,200 mm)

Section 5" x 2.25" (127 mm x 57 mm)

### Operating Cab

Structure conforms to ISO 8471 (ROPS) and ISO 8449 (FOPS)

Optional enclosed cab, heater and air conditioning

### Attachments and Fork Options

Cubing tines

Pallet forks 60" & 72" (1.52 & 1.83 m)

Rotating fork frames 48", 60", & 72" (1.22, 1.52, & 1.83 m)

45° Swing fork frames 60" & 72" (1.52 & 1.83 m)

Rubbish bucket 1 yd<sup>3</sup> (0.76 m<sup>3</sup>)

Variable reach truss boom

Quick switch attachment

Auxiliary hydraulic circuit

## Dimensions with Boom Retracted and Down

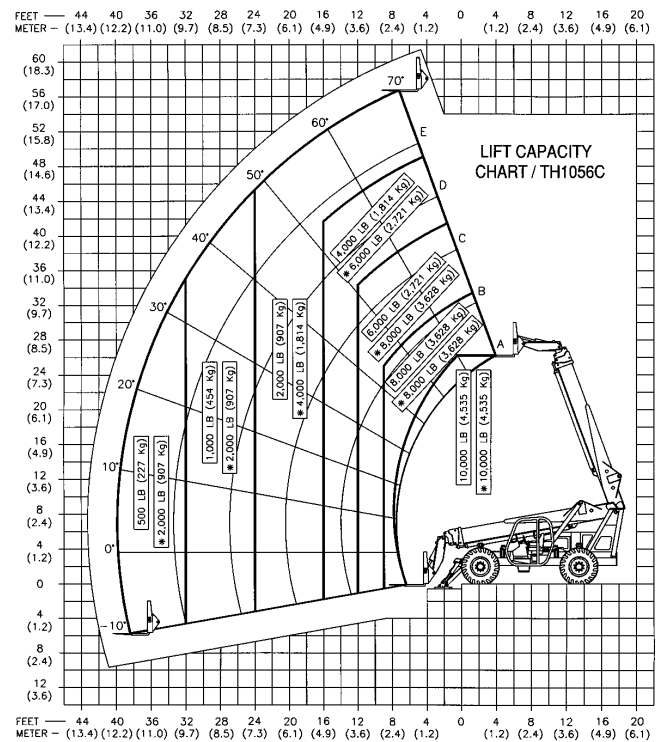
Overall L x W x H 27' x 8' 6" x 9' 9" (8.23 x 2.54 x 2.97 m)

Wheelbase 11' 3" (3.43 m)

Turning radius (outside tire) 15' 2" (4.62 m)

Ground clearance 1' 7" (.48 m)

## Working Ranges and Lift Capacities



### TEREX Handlers

455 N. Superior Ave. TEL 906-353-3500  
 Baraga, MI 49908 SALES 800-906-6174  
 USA PARTS & TECH SUPPORT 800-906-6174  
 WEB terex.com

For more information, product demonstration, or details on purchase, lease and rental plans, please contact your local TEREX Distributor.